

Reading Borough

LOCAL DEVELOPMENT SCHEME

July 2013



www.reading.gov.uk



Reading
Borough Council

Working better with you

1. INTRODUCTION

- 1.1 A Local Development Scheme is a document that sets out a local planning authority's programme for producing planning policy documents. Local planning authorities are required to produce a Local Development Scheme under Section 15 of the Planning and Compulsory Purchase Act 2004, as amended by part 111 of the Localism Act 2011. This is a document setting out which planning policy documents the authority will be producing and when. The LDS should state:
- (a) the local development documents that will be produced;
 - (b) the subject matter and geographical area to which each document is to relate;
 - (c) which documents are to have 'development plan' status;
 - (d) which documents (if any) are to be prepared jointly with one or more other local planning authorities;
 - (e) any matter or area where there is, or is likely to be, a joint committee;
 - (f) the timetable for the preparation and revision of the documents
- 1.2 This LDS therefore sets out the planning policy documents that Reading Borough Council intends to produce over the coming years, what and where they will cover and when they will be produced. Planning policy documents, known as Local Development Documents (LDDs) fall into three categories:
- **Development Plan Documents (DPDs)** that have been subject to independent testing and have the weight of development plan status;
 - **Supplementary Planning Documents (SPDs)**, which are not subject to independent testing and do not have development plan status; and
 - **Statement of Community Involvement (SCI)**; this sets out how the Council intends to achieve effective community involvement in the preparation of local development documents for the Borough.
- 1.3 The Council has produced a number of previous Local Development Schemes, in 2005, 2007 and, most recently, 2011. These set out the programmes for preparing the Local Development Framework, much of which has now been adopted. However, a number of recent changes mean that the 2013 LDS is, to some extent, a fresh start:
- Most of the documents detailed in the 2005-2011 LDSs have now been prepared and adopted (see section 2);
 - The National Planning Policy Framework (NPPF) has been produced, which combines national planning guidance into one document, and contains a number of important policy shifts;
 - There is now an assumption that, in most cases, local planning authorities will produce a single Local Plan as opposed to a

number of separate documents within the Local Development Framework;

- Formal joint arrangements for minerals and waste planning in Berkshire have now ended, and it is for individual authorities to produce their own documents.

1.4 Section 2 summarises the documents that have been adopted and which contain the current planning policy framework for Reading. This includes documents that cover a wider area than just Reading Borough. More detail on these documents is included in Appendix 1.

1.5 Section 3 summarises the programme for production of new planning policy documents. The main document will be a Local Plan. In line with the Government's preference, this will be a single document rather than the set of different documents that currently exist (Core Strategy, Reading Central Area Action Plan and Sites and Detailed Policies Document). This will be supported by further progress on the Community Infrastructure Levy. There will also be continued production of Supplementary Planning Documents, as well as revised versions of some of the procedural documents such as the Statement of Community Involvement. More detail on these documents is included in Appendix 2 (for the Local Plan) and Appendix 3 (for other documents).

2. EXISTING PLANNING POLICY DOCUMENTS

2.1 A number of planning policy documents were already adopted and in operation at the time of this LDS. Not all of these documents relate only to Reading Borough or were prepared by Reading Borough Council. In some cases, some of these documents are only partially still in operation, and Table 1 below and the schedules in Appendix 1 note where this is the case.

2.2 Table 1 below summarises the documents that are already in place and are used in decisions on planning applications. More information on each document, including scope, geographic coverage and process is set out in Appendix 1.

Table 1: Current Planning Policy Documents

Document Title	Adoption Date	End Year	Policy Lineage
<i>'Development Plan' Status</i>			
South East Plan (one retained policy ¹)	May 2009	2026	N/A
Core Strategy	Jan 2008	2026	N/A
Reading Central Area Action Plan	Jan 2009	2026	N/A
Sites and Detailed Policies Document	Oct 2012	2026	N/A
Proposals Map	Oct 2012	2026	N/A
Replacement Minerals Local Plan (Saved Policies ²)	May 2001	Not specified	N/A
Waste Local Plan (Saved Policies ³)	Dec 1998	2006	N/A
<i>Supplementary Planning Document Status</i>			
Battle Hospital Planning Brief	Apr 2005	Not specified	SDPD
Caversham Lock Area Development Principles	Mar 2006	Not specified	RCAAP
Chatham Street Development Brief	Dec 2002	Not specified	RCAAP
Dee Park Planning Brief	Dec 2008	Not specified	Core Strategy, SDPD
Design Guide to House Extensions	May 2003	Not specified	SDPD
Elvian School Planning and Development Brief	Feb 2011	Not specified	Core Strategy, SDPD
Employment, Skills and Training	Apr 2013	Not specified	Core Strategy
House Conversions and Houses in Multiple Occupation	Sep 2003	Not specified	Core Strategy, SDPD
Kenavon Drive Urban Design Concept Statement	Jul 2004	Not specified	RCAAP
Parking Standards and Design	Oct 2011	Not specified	Core Strategy
Planning Obligations under Section 106	Sep 2004	Not specified	Core Strategy
Reading Station Area Framework	Dec 2010	Not specified	RCAAP
South West Reading Planning Brief	Apr 2000	Not specified	
Station Hill South Planning and Urban Design Brief	Mar 2007	Not specified	RCAAP
Sustainable Design and Construction	Jul 2011	Not specified	Core Strategy
<i>Other Documents</i>			
Statement of Community Involvement	July 2006	Not specified	N/A

¹ Policy NRM6: Thames Basin Heaths Special Protection Area

² The saved policies in the Replacement Minerals Local Plan are: 1, 2, 2A, 6, 7, 8, 10, 11, 12, 13, 14, 15, 16, 17, 18, 19, 20, 21, 26, 28, 29

³ The saved policies in the Waste Local Plan are: WLP1, 3, 11, 13, 14, 15, 16, 17, 18, 19, 20, 21, 23, 24, 25, 26, 27, 28, 29, 30, 31, 33, and 34

3. PROGRAMME FOR PRODUCING PLANNING POLICY DOCUMENTS

3.1 This section sets out the programme for which planning policy documents the Council expects to produce, and the timescales and processes for production. Table 2 below summarises the documents to be produced and when they are anticipated to be finalised. More details on each document, including those aspects specified in the Planning and Compulsory Purchase Act 2004 (as amended) are set out in Appendices 2 (for the Local Plan) and 3 (for other documents).

Table 2: Summary Programme for Producing Planning Policy Documents

Document Title	Planned Consultation(s)	Expected Adoption Date	Policy Lineage
<i>'Development Plan' Status</i>			
Local Plan	July/Aug 2014 July/Aug 2015 Nov/Dec 2015	Nov 2016	National policy
<i>Supplementary Planning Document Status</i>			
Affordable Housing SPD	N/A (complete)	July 2013	Core Strategy, SDPD
Central Area Public Realm Strategy	Oct 2013	Jan 2014	RCAAP
Guidance on Implementation of Design & Development Policies	Nov 2014	Mar 2015	Core Strategy, SDPD
Kenavon Drive Planning Brief	Nov 2013	Mar 2014	RCAAP
Meadway Centre Planning Brief	N/A (complete)	Nov 2013	Core Strategy, SDPD
Residential Conversions SPD	N/A (complete)	Nov 2013	Core Strategy, SDPD
Planning Obligations under Section 106 of the T&CPA SPD	July-Sep 2013	Nov 2013	Core Strategy, SDPD
Site Specific Section 106 SPD	Nov 2013	Mar 2014	Core Strategy, SDPD
Sites in West Side of Central Reading Development Brief(s)	Nov 2014	Mar 2015	RCAAP
Other Site Development Briefs	As required	As required	Core Strategy, SDPD, RCAAP, Local Plan
<i>Other Document</i>			
Statement of Community Involvement	Nov 2013	Mar 2014	-
Sustainability Appraisal Scoping Report	Nov 2013	Feb 2013	-
Community Infrastructure Levy Charging Schedule	Nov/Dec 2013	Autumn 2014	Core Strategy, SDPD, RCAAP

3.2 The key document is the Local Plan. This is the sole document with development plan status that the Council is intending to produce, and it would replace all existing Development Plan Documents (the Core Strategy, Reading Central Area Action Plan, Sites and Detailed Policies Document and Proposals Map), as well as saved policies from the Minerals and Waste Local Plans. It will build on, and where appropriate incorporate, the policy areas set out in those DPDs, and respond to emerging issues, particularly those highlighted in the

NPPF. As set out in the NPPF, a combined Local Plan is now the preferred format for development plans, and this is the reason for the Council's approach. Full details on the Local Plan are set out in Appendix 2.

- 3.3 The Local Plan may well incorporate minerals and/or waste policies, which were previously intended to be part of a separate Minerals and Waste Development Framework. This was to be produced jointly with the other five unitary authorities in Berkshire, but the six Berkshire UAs abandoned the formal joint planning arrangements in 2011. However, there may well still be some form of joint working on minerals and/or waste (as well as other strategic planning matters with cross-boundary implications), on evidence gathering or potentially joint plan making with some neighbouring authorities. This will affect whether these matters can be included within the Local Plan. Future versions of the LDS will provide more up-to-date information.
- 3.4 In addition, prior to the first consultation stage of the Local Plan, the Council will produce updated versions of two key procedural documents, the Statement of Community Involvement and the Sustainability Appraisal Scoping Report. These need to be in place to inform how the Local Plan is consulted upon and assessed.
- 3.5 The Council will also continue to produce Supplementary Planning Documents, in order to help applicants make successful applications and aid infrastructure delivery by expanding on policies in development plan documents. These will include Briefs for important development sites, as well as documents expanding on topic-based policies, particularly those related to infrastructure delivery, alongside continuing to progress the Community Infrastructure Levy Charging Schedule.
- 3.6 Figure 3 summarises the interrelationship between existing and new planning policy documents.
- 3.7 Progress on production of planning policy documents is monitored in the Annual Monitoring Report, generally produced in December each year. These can be found on the Council's website⁴.

⁴ <http://www.reading.gov.uk/businesses/planning/planning-policy/research--monitoring-and-technical-reports/www-reading-gov-uk-amr/>

PLANNING POLICY DOCUMENTS AT 1 JULY 2013

PLANNING POLICY DOCUMENTS AT 2016

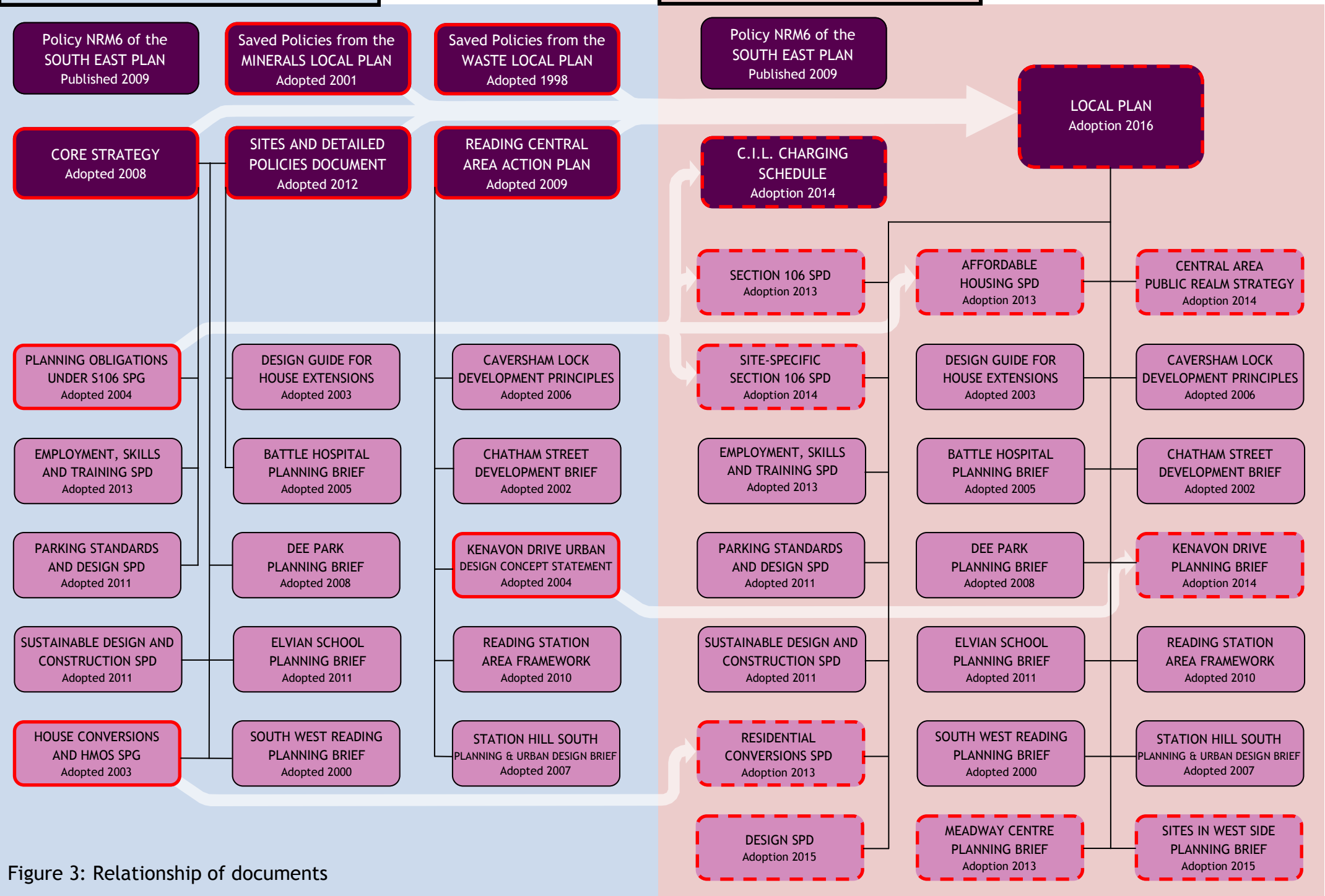
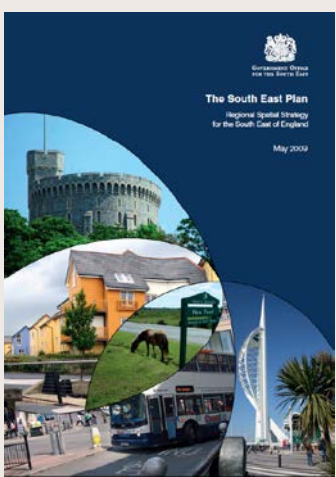


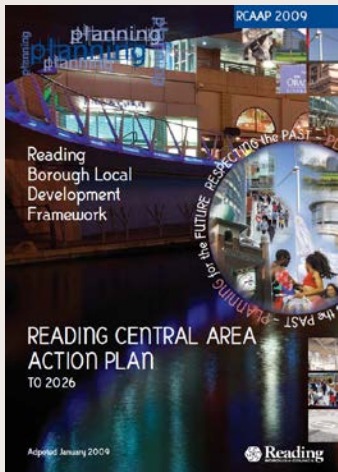
Figure 3: Relationship of documents

Document to be replaced
 New document
 Development plan supplemented by SPD/G
 Replacement
 Development plan status
Supplementary planning document

APPENDIX 1: EXISTING PLANNING POLICY DOCUMENTS

Title	SOUTH EAST PLAN	
Role and Subject	Regional and strategic planning policies	
Geographic coverage	South East England	
Status	Development Plan	
Policy lineage	N/A	
Parts of document that are current	NRM6: Thames Basin Heaths Special Protection Area [Remainder of document was revoked on 25 th March 2013]	
Draft	March 2006	
Examination	November 2006 - March 2007	
Receipt of Panel Report	August 2007	
Proposed Changes	July 2008	
Final Publication	May 2009	
Revoked	25 th March 2013 (with exception of policy NRM6)	
See part of the final document that includes the retained policy: http://webarchive.nationalarchives.gov.uk/20100528142817/http://www.gos.gov.uk/497648/docs/171301/815607/815696/Pages_from_RSS-3_Section_B.pdf		

Title	CORE STRATEGY	
Role and Subject	Vision, spatial strategy, sustainability framework, core strategic policies, development control policies, housing needs, directions of development.	
Geographic coverage	Whole of Reading Borough	
Status	Development Plan Document	
Policy lineage	N/A	
Parts of document that are current	Whole document	
Issues and Options	June 2005 http://www.reading.gov.uk/businesses/Planning/planning-policy/core-strategy/csissuesandoptions/	
Preferred Options	March 2006 http://www.reading.gov.uk/businesses/Planning/planning-policy/core-strategy/cspreferreddoptions/	
Submission	January 2007 http://www.reading.gov.uk/businesses/Planning/planning-policy/core-strategy/cssubmission/	
Examination	September - October 2007 http://www.reading.gov.uk/businesses/Planning/planning-policy/core-strategy/examination-into-the-core-strategy/	
Receipt of Inspectors Report	December 2007 http://www.reading.gov.uk/businesses/Planning/planning-policy/core-strategy/examination-into-the-core-strategy/	
Adoption	January 2008 http://www.reading.gov.uk/businesses/Planning/planning-policy/core-strategy/adoptedcs/	
See final document: http://www.reading.gov.uk/documents/servingyou/planning/local_development_framework/19840/Core-Strategy-Adopted-Jan08.pdf		

Title	READING CENTRAL AREA ACTION PLAN	
Role and Subject	Central Area Development Strategy and Development Framework. Site Development Principles. Detailed Map of opportunities sites to be the subject of development briefs.	
Geographic coverage	Central Area (as defined in RCAAP and on Proposals Map)	
Status	Development Plan Document	
Policy lineage	Core Strategy	
Parts of document that are current	Whole document	
Issues and Options	March 2006 http://www.reading.gov.uk/businesses/Planning/planning-policy/reading-central-area-action-plan/rcaapissuesandoptions/	
Preferred Options	January 2007 http://www.reading.gov.uk/businesses/Planning/planning-policy/reading-central-area-action-plan/rcaappreferredoptions/	
Submission	January 2008 http://www.reading.gov.uk/businesses/Planning/planning-policy/reading-central-area-action-plan/rcaapsubmission/	
Examination	September 2008 http://www.reading.gov.uk/businesses/Planning/planning-policy/reading-central-area-action-plan/rcaapexamination/	
Receipt of Inspectors Report	November 2008 http://www.reading.gov.uk/businesses/Planning/planning-policy/reading-central-area-action-plan/rcaapexamination/	
Adoption	January 2009 http://www.reading.gov.uk/businesses/Planning/planning-policy/reading-central-area-action-plan/adoptedrcaap/	
See final document: http://www.reading.gov.uk/documents/servingyou/planning/local_development_framework/20111/RCAAP-Adopted-0109.pdf (Text) http://www.reading.gov.uk/documents/servingyou/planning/local_development_framework/20112/RCAAP-Adopted-0109-MapsandApps.pdf (Maps and Appendices)		

Title	SITES AND DETAILED POLICIES DOCUMENT	
Role and Subject	Document setting out Development Management Policies along with housing allocations and other site allocation/designations. Document combines Site Allocations and Development Management Documents.	
Geographic coverage	Whole Borough (<i>Individual policies may have specific area</i>)	
Status	Development Plan Document	
Policy lineage	Core Strategy	
Parts of document that are current	Whole document	
Issues and Options	<p>October 2008⁵ <i>Site Allocations Document</i> http://www.reading.gov.uk/businesses/Planning/planning-policy/sites-and-detailed-policies-document/saddpd/</p> <p><i>Development Management Document</i> http://www.reading.gov.uk/documents/servingyou/planning/local_development_framework/19861/Development-Management-Document-Issues-Options-1008.pdf</p>	
New Sites Consultation	<p>October 2009 http://www.reading.gov.uk/businesses/Planning/planning-policy/sites-and-detailed-policies-document/newsites2009/</p>	
Pre-Submission	<p>February 2010 http://www.reading.gov.uk/businesses/Planning/planning-policy/sites-and-detailed-policies-document/presubsdpd/</p>	
Revised Pre-Submission	<p>February 2011 http://www.reading.gov.uk/businesses/Planning/planning-policy/sites-and-detailed-policies-document/revisedpresubsdpd/</p>	
Examination	<p>November - December 2011 http://www.reading.gov.uk/businesses/Planning/planning-policy/sites-and-detailed-policies-document/sdpdexamination/</p>	
Main Modifications	<p>February - May 2012 http://www.reading.gov.uk/businesses/Planning/planning-policy/sites-and-detailed-policies-document/sdpdexamination/</p>	
Receipt of Inspectors Report	<p>September 2012 http://www.reading.gov.uk/businesses/Planning/planning-policy/sites-and-detailed-policies-document/sdpdexamination/</p>	
Adoption	<p>October 2012 http://www.reading.gov.uk/businesses/Planning/planning-policy/sites-and-detailed-policies-document/sdpdadopted/</p>	
See final document:		
http://www.reading.gov.uk/documents/servingyou/planning/local_development_framework/23833/SDPD-Adopted-1012.pdf		

⁵ The SDPD was originally intended to be two separate documents, the Site Allocations Document and Development Management Document, but the two were combined to create a single document in 2010

Title	PROPOSALS MAP	
Role and Subject	Updated local development constraints, designations, site allocations, Action Area Plans .	
Geographic coverage	Whole Borough	
Status	Development Plan Document	
Policy lineage	Core Strategy, Reading Central Area Action Plan, Sites and Detailed Policies Document	
Parts of document that are current	Whole document	
Issues and Options	<p>October 2008⁶ <i>Site Allocations Document</i> http://www.reading.gov.uk/businesses/Planning/planning-policy/sites-and-detailed-policies-document/saddpd/ <i>Development Management Document</i> http://www.reading.gov.uk/documents/servingyou/planning/local_development_framework/19861/Development-Management-Document-Issues-Options-1008.pdf</p>	
New Sites Consultation	<p>October 2009 http://www.reading.gov.uk/businesses/Planning/planning-policy/sites-and-detailed-policies-document/newsites2009/</p>	
Pre-Submission	<p>February 2010 http://www.reading.gov.uk/businesses/Planning/planning-policy/sites-and-detailed-policies-document/presubsdpd/</p>	
Revised Pre-Submission	<p>February 2011 http://www.reading.gov.uk/businesses/Planning/planning-policy/sites-and-detailed-policies-document/revisedpresubsdpd/</p>	
Examination	<p>November – December 2011 http://www.reading.gov.uk/businesses/Planning/planning-policy/sites-and-detailed-policies-document/sdpdexamination/</p>	
Main Modifications	<p>February – May 2012 http://www.reading.gov.uk/businesses/Planning/planning-policy/sites-and-detailed-policies-document/sdpdexamination/</p>	
Receipt of Inspectors Report	<p>September 2012 http://www.reading.gov.uk/businesses/Planning/planning-policy/sites-and-detailed-policies-document/sdpdexamination/</p>	
Adoption	<p>October 2012 http://www.reading.gov.uk/businesses/Planning/planning-policy/sites-and-detailed-policies-document/sdpdadopted/</p>	
<p>See final Map: http://reading.addresscafe.com/app/exploreit/default.aspx</p>		

NB: The Proposals Map was developed alongside the Sites and Detailed Policies Document, so the process above is the same as for that document.

⁶ The SDPD was originally intended to be two separate documents, the Site Allocations Document and Development Management Document, but the two were combined to create a single document in 2010

Title	REPLACEMENT MINERALS LOCAL PLAN	
Role and Subject	Policies and sites for development for minerals	
Geographic coverage	Berkshire (Now 6 Unitary Authorities - Bracknell Forest Borough Council, Reading Borough Council, Royal Borough of Windsor and Maidenhead, Slough Borough Council, West Berkshire Council, Wokingham Borough Council)	
Status	Development Plan Document	
Policy lineage	N/A	
Parts of document that are current	Following policies were 'saved' in September 2007 and remain in place: 1, 2, 2A, 6, 7, 8, 10, 11, 12, 13, 14, 15, 16, 17, 18, 19, 20, 21, 26, 28, 29	
Draft Plan	1993	
Public Inquiry	1993	
Report of Inspector	May 1994	
Adopted	November 1994	
Alterations Adopted	December 1997	
Further Alterations Adopted	May 2001	
See final document: http://www.reading.gov.uk/businesses/Planning/planning-policy/minerals-and-waste-planning-policy/mineralslocalplan/		

Title	WASTE LOCAL PLAN	
Role and Subject	Policies and sites for development for waste	
Geographic coverage	Berkshire (Now 6 Unitary Authorities - Bracknell Forest Borough Council, Reading Borough Council, Royal Borough of Windsor and Maidenhead, Slough Borough Council, West Berkshire Council, Wokingham Borough Council)	
Status	Development Plan Document	
Policy lineage	N/A	
Parts of document that are current	Following policies were 'saved' in September 2007 and remain in place: WLP1, 3, 11, 13, 14, 15, 16, 17, 18, 19, 20, 21, 23, 24, 25, 26, 27, 28, 29, 30, 31, 33, and 34	
Public consultation	1993 & 1994	
Draft Plan	December 1994	
Public Inquiry	1995-1996	
Report of Inspector	Early 1998	
Adopted	December 1998	
See final document: http://www.reading.gov.uk/businesses/Planning/planning-policy/minerals-and-waste-planning-policy/wastelocalplan/		

Title	STATEMENT OF COMMUNITY INVOLVEMENT	
Role and Subject	Statement setting out community involvement strategy, events, exercises and consultation undertaken and to be undertaken in preparing the RBC LDD.	
Geographic coverage	Whole of Reading Borough	
Status	Statement of Community Involvement	
Policy lineage	N/A	
Parts of document that are current	Whole document	
Draft	March 2005 http://www.reading.gov.uk/documents/servingyou/planning/local_development_framework/19892/Draft-RBC-SCI-Oct04-Mar05.pdf	
Pre-Submission	June 2005 http://www.reading.gov.uk/documents/servingyou/planning/local_development_framework/20083/Pre-Submission-SCI-Jun05.pdf	
Submission	October 2005 http://www.reading.gov.uk/documents/servingyou/planning/local_development_framework/20409/Submission-SCI-Oct05.pdf	
Examination	2005-2006	
Receipt of Inspectors Report	May 2006 http://www.reading.gov.uk/documents/servingyou/planning/local_development_framework/20282/SCI-Inspectors-Report-May06.pdf	
Adoption	July 2006 http://www.reading.gov.uk/documents/servingyou/planning/local_development_framework/20280/SCI-Adopted-July-06.pdf	
See final document: http://www.reading.gov.uk/documents/servingyou/planning/local_development_framework/20280/SCI-Adopted-July-06.pdf		

Title	BATTLE HOSPITAL REVISED PLANNING BRIEF	
Role and Subject	Development of Battle Hospital	
Geographic coverage	Battle Hospital site	
Status	Supplementary Planning Document	
Policy lineage	Sites and Detailed Policies Document	
Parts of document that are current	Whole document	
Draft	November 2004	
Adoption	18 th April 2005	
See final document:		
http://www.reading.gov.uk/documents/servingyou/planning/futuredevelopments/19613/BATTLE-BRIEF-Oct05.pdf		

Title	CAVERSHAM LOCK AREA DEVELOPMENT PRINCIPLES	
Role and Subject	Development of Caversham Lock area	
Geographic coverage	Caversham Lock	
Status	Supplementary Planning Document	
Policy lineage	Reading Central Area Action Plan	
Parts of document that are current	Whole document	
Draft	October 2005	
Adoption	20 th March 2006	
See final document:		
http://www.reading.gov.uk/documents/servingyou/planning/futuredevelopments/19621/Caversham-Lock-Dev-Principles-Apr06.pdf		

Title	CHATHAM STREET DEVELOPMENT BRIEF	
Role and Subject	Development of Chatham Street area	
Geographic coverage	Chatham Street	
Status	Supplementary Planning Document	
Policy lineage	Reading Central Area Action Plan	
Parts of document that are current	Whole document	
Draft	October 2002	
Adoption	December 2002	
See final document:		
http://www.reading.gov.uk/documents/servingyou/planning/supplementary-guidance/20464/Chatham-Street-Development-Brief.pdf		

Title	DEE PARK PLANNING BRIEF	
Role and Subject	Development of Dee Park area	
Geographic coverage	Dee Park	
Status	Supplementary Planning Document	
Policy lineage	Core Strategy, Sites and Detailed Policies Document	
Parts of document that are current	Whole document	
Draft	July 2008	
Adoption	December 2008	
See final document:		
http://www.reading.gov.uk/documents/servingyou/planning/supplementary-guidance/20471/Dee-Park-Planning-Brief-1208-p1to17.pdf (P1-16) http://www.reading.gov.uk/documents/servingyou/planning/supplementary-guidance/20472/Dee-Park-Planning-Brief-1208-pp18to35.pdf (P17-33)		

Title	DESIGN GUIDE TO HOUSE EXTENSIONS	
Role and Subject	Detailed design guidelines for house extensions	
Geographic coverage	Whole Borough	
Status	Supplementary Planning Document	
Policy lineage	Sites and Detailed Policies Document	
Parts of document that are current	Whole document	
Draft	November 2002	
Adoption	May 2003	
See final document:		
http://www.reading.gov.uk/documents/servingyou/planning/supplementary-guidance/20474/DesignGuidetoHouseExtns.pdf		

Title	ELVIAN SCHOOL PLANNING AND DEVELOPMENT BRIEF	
Role and Subject	Development of the Elvian School site	
Geographic coverage	Elvian School site, Bath Road	
Status	Supplementary Planning Document	
Policy lineage	Core Strategy, Sites and Detailed Policies Document	
Parts of document that are current	Whole document	
Draft	October 2010	
Adoption	14 th February 2011	
See final document:		
http://www.reading.gov.uk/documents/servingyou/planning/local_development_framework/19933/Elvian-School-Brief-Adopted-0211.pdf		

Title	EMPLOYMENT, SKILLS AND TRAINING S.P.D.	
Role and Subject	Detailed guidance for securing planning obligation contributions from developers towards local labour market initiatives.	
Geographic coverage	Whole Borough	
Status	Supplementary Planning Document	
Policy lineage	Core Strategy, Sites and Detailed Policies Document	
Parts of document that are current	Whole document	
Draft	November 2012	
Adoption	15 th April 2013	
See final document:		
http://www.reading.gov.uk/documents/servingyou/planning/supplementary-guidance/25153/Employment-Skills-and-Training-SPD-Adopted-0413.pdf		

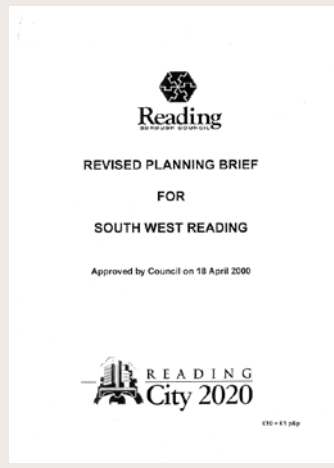
Title	HOUSE CONVERSIONS AND HOUSES IN MULTIPLE OCCUPATION	
Role and Subject	Guidance for proposals to convert houses to flats or houses in multiple occupation.	
Geographic coverage	Whole Borough	
Status	Supplementary Planning Document	
Policy lineage	Core Strategy, Sites and Detailed Policies Document	
Parts of document that are current	Whole document	
Draft	April 2003	
Adoption	22 nd September 2003	
See final document:		
http://www.reading.gov.uk/documents/servingyou/planning/19398/house-conversion-and-house-in-multi-occ.pdf		


Title	KENAVON DRIVE URBAN DESIGN CONCEPT STATEMENT	
Role and Subject	Guidance for the urban design aspects of the development of the Kenavon Drive area	
Geographic coverage	Kenavon Drive area	
Status	Supplementary Planning Document	
Policy lineage	Core Strategy, Reading Central Area Action Plan	
Parts of document that are current	Whole document	
Draft	April 2004	
Adoption	July 2004	
See final document:		
http://www.reading.gov.uk/documents/servingyou/planning/19405/Kenavon-Dirve-UrbanDesignConceptStatemt.pdf		

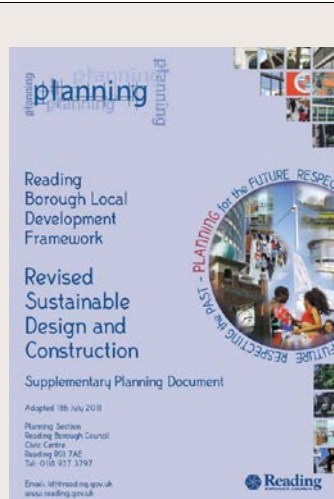
Title	REVISED PARKING STANDARDS & DESIGN S.P.D.	
Role and Subject	Guidance on the levels of parking that should be provided as part of new developments and on the design of parking.	
Geographic coverage	Whole Borough	
Status	Supplementary Planning Document	
Policy lineage	Core Strategy	
Parts of document that are current	Whole document	
Draft	July 2011	
Adoption	31 st October 2011	
See final document: http://www.reading.gov.uk/documents/servingyou/planning/local_development_framework/21420/Revised-Parking-SPD-Adopted-1011.pdf		

Title	PLANNING OBLIGATIONS UNDER SECTION 106 OF TOWN AND COUNTRY PLANNING ACT 1990	
Role and Subject	Framework for determining what planning obligations will be sought.	
Geographic coverage	Whole Borough	
Status	Supplementary Planning Document	
Policy lineage	Core Strategy, Sites and Detailed Policies Document	
Parts of document that are current	Whole document with the exception of Section 6 (Economic Development)	
Draft	January 2004	
Adoption	September 2004 (amended version)	
See final document: http://www.reading.gov.uk/documents/servingyou/planning/supplementary-guidance/20514/SPG-Planning-Obligations-UnderS106.pdf		

Title	READING STATION AREA FRAMEWORK	
Role and Subject	Guidance for the development of the area around Reading Station	
Geographic coverage	Station/River Major Opportunity Area	
Status	Supplementary Planning Document	
Policy lineage	Reading Central Area Action Plan	
Parts of document that are current	Whole document	
Draft	February 2010	
Adoption	1 st December 2010	
See final document: http://www.reading.gov.uk/businesses/planning/planning-policy/supplementary-planning-guidance-and-documents/sites/reading-station-area-framework/		

Title	SOUTH WEST READING PLANNING BRIEF	
Role and Subject	Guidance for the development of South West Reading	
Geographic coverage	South West Reading	
Status	Supplementary Planning Document	
Policy lineage	Sites and Detailed Policies Document	
Parts of document that are current	Whole document	
Draft	1999	
Adoption	April 2000	
See final document: http://www.reading.gov.uk/documents/servingyou/planning/supplementary-guidance/20492/Revised-Planning-Brief-for-South-West-Reading.pdf		

Title	STATION HILL SOUTH PLANNING AND URBAN DESIGN BRIEF	
Role and Subject	Guidance for the development of the Station Hill South site	
Geographic coverage	Station Hill South	
Status	Supplementary Planning Document	
Policy lineage	Reading Central Area Action Plan	
Parts of document that are current	Whole document	
Draft	May 2006	
Adoption	March 2007	
See final document: http://www.reading.gov.uk/businesses/Planning/planning-policy/supplementary-planning-guidance-and-documents-sites/stationhillsouth/		

Title	SUSTAINABLE DESIGN AND CONSTRUCTION S.P.D.	
Role and Subject	Guidance for the application of the Council's policies on sustainable design and construction.	
Geographic coverage	Whole Borough	
Status	Supplementary Planning Document	
Policy lineage	Core Strategy	
Parts of document that are current	Whole document	
Draft	February 2011	
Adoption	11 th July 2011	
See final document: http://www.reading.gov.uk/documents/servingyou/planning/local_development_framework/20433/Sustainable-Design-and-Construction-SPD-Adopted-0711.pdf		

APPENDIX 2: LOCAL PLAN PRODUCTION


Summary


Title	LOCAL PLAN
Role and Subject	<p>Vision and key objectives; spatial strategy; overall development needs including for housing, employment, retail and leisure, community uses and infrastructure; development management policies, including design, sustainable design, local requirements for infrastructure and affordable housing, amenity etc; site allocations to meet development needs; designation of land for protection or other policy designations; implementation and monitoring framework.</p> <p>Potential to include minerals and waste policies and allocations (see paragraph 3.3).</p> <p>On initial consideration, the following are likely to be among the main areas where revision to policy will need to be considered. Most of these are due to changes in national policy in the NPPF, national priorities such as progress towards zero carbon, or the national planning system (CIL, permitted development rights).</p> <ul style="list-style-type: none"> • Level of development need that should be accommodated (housing, employment, retail, infrastructure, other uses); • Location of development, including site allocations; • Consider inclusion of minerals and waste policies; • A strategy for the historic environment; • Updated sustainable design policies; • Updated infrastructure provision policies to reflect changes to CIL and Section 106; • Any changes to policies needed to reflect new permitted development rights (e.g. residential amenity and employment) <p>It is expected that many other policy areas will not need major change, and can largely be transferred to a new Local Plan, subject to consultation and Sustainability Appraisal.</p>
Geographic coverage	Whole of Reading Borough
Status	Development Plan
Joint preparation	There is potential for some joint preparation of parts of the plan with neighbouring authorities, in particular relating to minerals and waste and other strategic cross-boundary matters. This will be a matter for further discussion with adjacent authorities, and more information will be reported in future versions of the LDS if and when it becomes available.
Policy lineage	National policy
Documents that would be replaced	Core Strategy, Reading Central Area Action Plan, Sites and Detailed Policies Document, Proposals Map. Also potentially Replacement Minerals Local Plan (saved policies), Waste Local Plan (saved policies)
First call for site nominations	January 2014
Consultation on issues and potential sites	July/August 2014
Draft Local Plan for consultation	July/August 2015
Revised Draft Local Plan consultation	November/December 2015
Submission	February 2016
Examination	May, June, July 2016
Adoption	November 2016

Detailed Timetable

A2.1 The table below shows the main blocks of work in drawing up a Local Plan, and approximately when they are expected to be undertaken. The fact that a certain element of work is not shown does not mean that it will not be undertaken, merely that it does not form one of the most significant elements of work for project planning. Likewise, the timescales shown are approximate only and are an indication at this stage - the main milestones that progress should be judged against are those shown in the Local Plan table in Appendix 2 (and highlighted as key stages in pink below).

2013	Jul	Evidence - Population and Demography	Evidence - Local Aggregate Assessment	Set up mechanisms for Duty to Cooperate, and initial discussions
	Aug			
	Sep	Evidence - Strategic Housing Market Assessment (housing needs)	Evidence - flood risk	
	Oct			
	Nov			
	Dec			
2014	Jan	First call for site nominations		
	Feb	Evidence - Strategic Housing Land Availability Assessment	Evidence - infrastructure needs	Evidence - waste planning needs
	Mar		Evidence - Employment and retail needs	
	Apr			
	May			
	Jun			
	Jul	Consultation on issues and potential sites		
	Aug			
	Sep			
	Oct	Develop overall strategy of development scale and location		
	Nov			
	Dec			
2015	Jan	Develop development management policies	Develop site allocation and area designations	Update evidence base
	Feb			
	Mar			
	Apr	Test development management policies for viability	Create Draft Proposals Map	Develop monitoring and implementation framework
	May			
	Jun			
	Jul	Consultation on Draft Local Plan		
	Aug			
	Sep	Amendments to Plan, including further liaison with interested parties on wording.		
	Oct	Update evidence where necessary.		
Nov	Consultation on Revised Draft Local Plan			
Dec	Minor amendments and coordination of evidence			
2016	Jan	Submission of Local Plan		
	Feb			
	Mar			
	Apr			
	May			
	Jun	Examination of Local Plan		
	Jul			
	Aug			
	Sep	Report of Inspector		
	Oct			
	Nov	Adoption		
	Dec			

 Key milestone (shown in summary)

 External advice (e.g. consultant) may be required

Resources

- A2.2 Much of the work to be undertaken on the Local Plan will be carried out using existing resources, in particular preparing policies and documents, carrying out sustainability appraisal and liaising with key consultees and stakeholders.
- A2.3 However, as can be seen from the table above, there are some particular points which are particularly resource-intensive or where additional resources will be required. These are summarised by financial year below:
- **2013-2014**
 - Evidence base - demographics, housing need, Local Aggregate Assessment and flood risk
 - Engage with local community and development industry to nominate potential sites for development
 - **2014-2015**
 - Evidence base - employment and retail need, waste evidence
 - Wide-ranging consultation on issues and potential sites
 - **2015-2016**
 - Viability testing of draft local requirements (e.g. S106/CIL, affordable housing, sustainability policies)
 - Consultation on Draft and Revised Draft Local Plans
 - **2016-2017**
 - Examination of Local Plan
- A2.4 In the case of consultation exercises, these are usually managed in-house using existing staff, although there may be financial implications where they are wide-ranging. Elements of evidence gathering that are highlighted are likely to involve external expertise, most likely the use of planning consultants, with associated costs, although in some cases the costs can be reduced by combining in-house expertise with work by consultants and commissioning studies jointly with adjoining local authorities. In terms of the Examination, this can be a significant financial cost, as the Planning Inspectorate charges the Council for their time, and there are additional resource implications in terms of administration support and room hire etc.
- A2.5 The Local Plan is the most significant of the documents to be produced within this Local Development Scheme. It is currently considered that there are likely to be sufficient resources to produce this document alongside the other documents listed in Appendix 3, albeit that additional resource pressures will arise in commissioning necessary studies and holding an examination which exceed budget allowances (see above). However, in the event that resources are too limited to allow this, the Local Plan will generally take priority, unless there are strong reasons for this not to be the case. The possible exception is for introduction of the Community Infrastructure

Levy, which is an important priority to ensure that development mitigates its impacts and contributes towards the provision of vital infrastructure.

Risks

A2.6 There are a number of potential risks in producing a document such as the Local Plan. These are considered below:

- **Changing national policy:** If new policy is introduced at the national level, this can cause significant issues in terms of delaying and derailing local policy. This was the case in Reading when the introduction of the National Planning Policy Framework caused an approximately six month delay in adopting the Sites and Detailed Policies Document.

The main area where national policy is likely to change in the near future is in terms of waste planning. The NPPF does not deal with waste, and new national guidance is due to be put in place. Prior to such policy being in place, it would make no sense for the Local Plan to attempt to include local waste policies, so the Local Plan should proceed without waste being included, and it can be dealt with in a later document. However, it is anticipated that national waste policy should be in place before the end of 2013 and can be taken on board in producing local waste policies.

- **Changing national planning system:** The planning system has been extensively tinkered with in recent years. Some changes, for instance new permitted development rights introduced in May 2013, have implications for policies on residential amenity and employment land. Other changes have included changing regulations on CIL, which affects when the Council can progress its Draft Charging Schedule and associated policies on Section 106 agreements. There is little that the Council can do to guard against this other than to monitor the situation and take early action to alter the programme or the document itself if needs be. However, the Planning Minister has recently indicated that the drip-feed of incremental changes to the planning system may be coming to an end.
- **Less resource availability:** Reduced resource availability is a real risk to the programme envisaged. It could mean longer timescales for policy drafting or in-house evidence collation. It could also mean being unable to finance external consultants to produce key documents. In the latter case, the Council will need to consider whether certain pieces of evidence can instead be produced in-house, or whether the timescale of the Plan should be pushed back to allow this to be budgeted for in a later

financial year. In general, although some reasonable flexibility is built into the current programme, much reduced resource availability is likely to mean a delay in the timescale, and this will need to be reflected in future versions of the LDS.

- **Changing local circumstances:** It is not considered likely that there will be substantial changes to local planning circumstances (e.g. demography, development pressures, economic changes) that would cause a major issue for the programme outlined in this LDS. Planning policies should be drafted with enough flexibility to cope with changes in circumstances, and the flexibility of the policies will be one of the tests when the document is examined.
- **Duty to Co-operate:** The duty to co-operate, introduced through the Localism Act 2011, is one of the most significant considerations in plan-making, and has been the reason for delays in plan production in a number of other authorities. It is the first thing that an Inspector will consider in examining a plan. In Berkshire, there is a tradition of joint working, but there are nevertheless some difficult issues to address with other authorities, both in Berkshire and elsewhere, particularly since some of Reading's objectively assessed needs may need to be met in adjoining authorities. Waste planning is one such potential issue, and cooperation will also be required for delivery of housing and infrastructure provision, including education. Setting up procedures and an ongoing process for cooperating with neighbouring authorities to try to resolve these issues is therefore a priority early in the process.

APPENDIX 3: OTHER DOCUMENTS TO BE PRODUCED

Title	AFFORDABLE HOUSING S.P.D
Role and Subject	Guidance for provision of affordable housing on small and large sites
Geographic coverage	Whole Borough
Status	Supplementary Planning Document
Policy lineage	Core Strategy, Sites and Detailed Policies Document
Documents that would be replaced	S.P.G on Planning Obligations under Section 106 of the Town and Country Planning Act 1990 [part]
Draft	November 2012
Adoption	July 2013

Title	CENTRAL AREA PUBLIC REALM STRATEGY
Role and Subject	Guidance on the improvement of existing public realm and the creation of new public realm within central Reading.
Geographic coverage	Central Area (as defined in the Reading Central Area Action Plan)
Status	Supplementary Planning Document
Policy lineage	Reading Central Area Action Plan
Documents that would be replaced	None
Draft	November 2013
Adoption	March 2014

Title	GUIDANCE ON IMPLEMENTATION OF DESIGN AND DEVELOPMENT POLICIES
Role and Subject	Guidance on implementation of design principles, appropriate standards and preparation of Design Statements to accompany planning applications.
Geographic coverage	Whole Borough
Status	Supplementary Planning Document
Policy lineage	Core Strategy, Sites and Detailed Policies Document
Documents that would be replaced	None
Draft	November 2014
Adoption	March 2015

Title	KENAVON DRIVE PLANNING BRIEF
Role and Subject	Guidance for the development of sites in the Kenavon Drive area
Geographic coverage	Kenavon Drive area
Status	Supplementary Planning Document
Policy lineage	Reading Central Area Action Plan
Documents that would be replaced	Kenavon Drive Urban Design Concept Statement
Draft	November 2013
Adoption	March 2014

Title	MEADWAY CENTRE PLANNING BRIEF
Role and Subject	Guidance for the development of the Meadway Centre
Geographic coverage	Meadway Centre, Honey End Lane
Status	Supplementary Planning Document
Policy lineage	Core Strategy, Sites and Detailed Policies Document
Documents that would be replaced	None
Initial consultation	February - April 2012
Draft	November 2012
Adoption	November 2013

Title	RESIDENTIAL CONVERSIONS S.P.D.
Role and Subject	Guidance for proposals to convert houses to flats or houses in multiple occupation.
Geographic coverage	Whole Borough
Status	Supplementary Planning Document
Policy lineage	Core Strategy, Sites and Detailed Policies Document
Documents that would be replaced	House Conversions and Houses in Multiple Occupation SPG
Draft	May 2013
Adoption	November 2013

Title	PLANNING OBLIGATIONS UNDER SECTION 106 OF TOWN AND COUNTRY PLANNING ACT 1990 S.P.D.
Role and Subject	Update of existing framework for determining how planning obligations will be sought.
Geographic coverage	Whole Borough
Status	Supplementary Planning Document
Policy lineage	Core Strategy, Sites and Detailed Policies Document
Documents that would be replaced	S.P.G on Planning Obligations under Section 106 of the Town and Country Planning Act 1990 [part]
Draft	July/August 2013
Adoption	November 2013

Title	SITE-SPECIFIC SECTION 106 AGREEMENTS S.P.D.
Role and Subject	Framework for determining how planning obligations will be sought to deal with individual site-specific issues.
Geographic coverage	Whole Borough
Status	Supplementary Planning Document
Policy lineage	Core Strategy, Sites and Detailed Policies Document
Documents that would be replaced	Planning Obligations under Section 106 of the Town and Country Planning Act 1990 SPD
Draft	November 2013
Adoption	March 2014

Title	SITES IN WEST SIDE OF CENTRAL READING DEVELOPMENT BRIEF(S)
Role and Subject	Examining the development potential of several sites including the Hosier Street area and the Cattle Market
Geographic coverage	West Side Major Opportunity Area (policy RC2 of Reading Central Area Action Plan)
Status	Supplementary Planning Document
Policy lineage	Reading Central Area Action Plan
Documents that would be replaced	None
Draft	November 2014
Adoption	March 2015

Title	OTHER SITE DEVELOPMENT BRIEFS
Role and Subject	Examining development potential of various sites including sites identified and proposed for allocation for development in the Sites and Detailed Policies Document, and sites identified through the production of the Local Plan.
Geographic coverage	Various
Status	Supplementary Planning Document
Policy lineage	Core Strategy, Reading Central Area Action Plan, Sites and Detailed Policies Document, Local Plan
Documents that would be replaced	None
Draft	As required
Adoption	As required

Title	STATEMENT OF COMMUNITY INVOLVEMENT
Role and Subject	Revised version of the Statement setting out community involvement strategy for planning policy documents and for major planning applications.
Geographic coverage	Whole Borough
Status	Statement of Community Involvement
Policy lineage	N/A
Documents that would be replaced	Statement of Community Involvement (Adopted 2006)
Draft for consultation	November 2013
Adoption	March 2014

Title	SUSTAINABILITY APPRAISAL SCOPING REPORT
Role and Subject	Revised version of the document which provides the framework for carrying out a sustainability appraisal of planning policy documents, including sustainability objectives.
Geographic coverage	Whole Borough
Status	Background report
Policy lineage	N/A
Documents that would be replaced	Sustainability Appraisal Scoping Report (Revised October 2008)
Draft for consultation	November 2013
Final version	February 2014

Title	COMMUNITY INFRASTRUCTURE LEVY CHARGING SCHEDULE
Role and Subject	Basis for applying the Community Infrastructure Levy to secure funding from development for infrastructure to support growth and development.
Geographic coverage	Whole Borough
Status	Community Infrastructure Levy Charging Schedule
Policy lineage	Core Strategy, Reading Central Area Action Plan, Sites and Detailed Policies Document
Documents that would be replaced	None
Preliminary Draft	February 2013
Draft	November 2013
Submission	March 2014
Examination	Summer 2014
Adoption	Autumn 2014